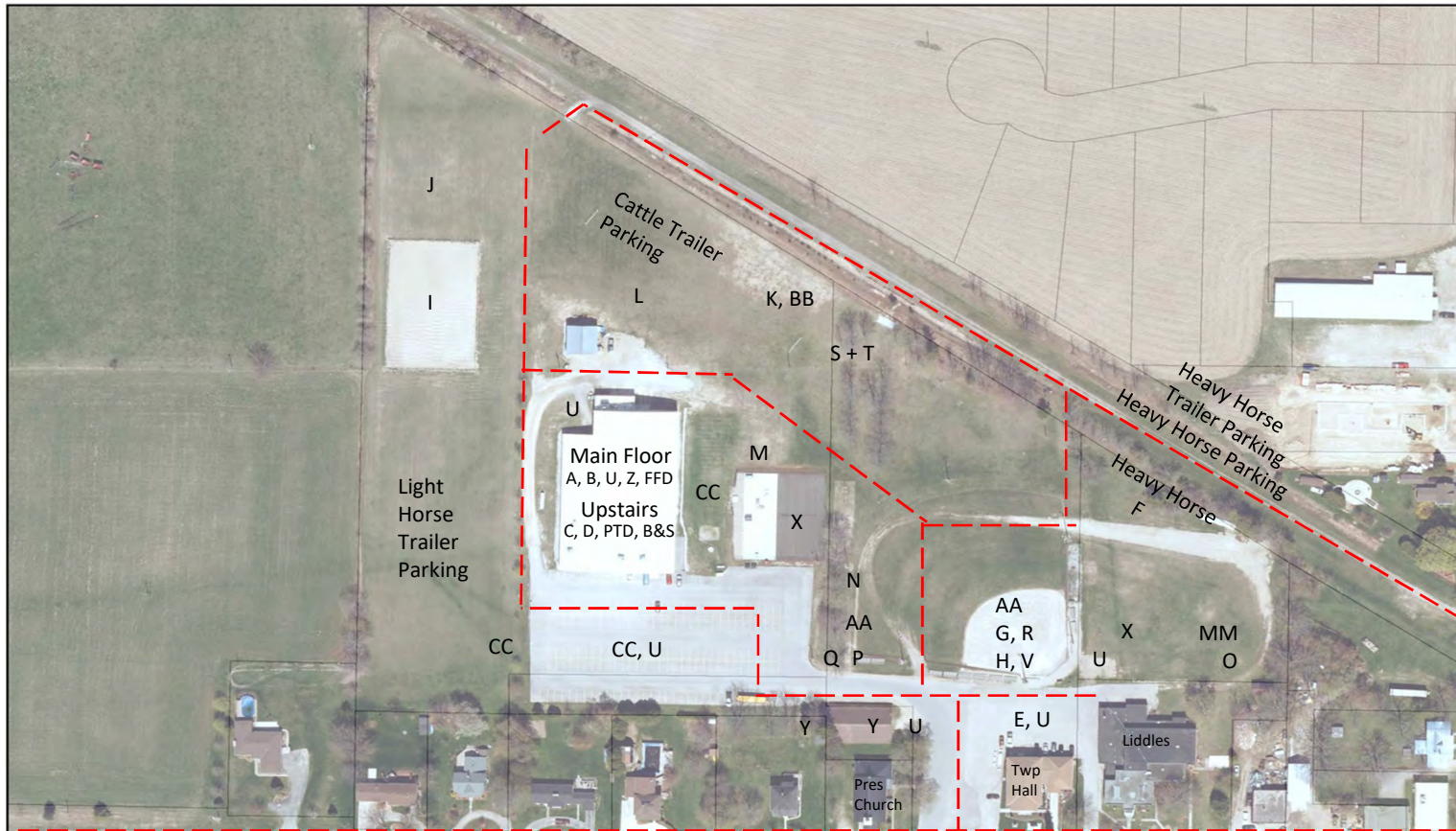


Ripley-Huron Fall Fair

September 28 & 29, 2018

17 Queen Street, Ripley | Friday 5 p.m.-10 p.m., Saturday 9 a.m.-4:30 p.m.

- A – Exhibits, School, 4-H
- B – Commercial Vendors
- C – Little Prince/Princess
- C – Ambassador
- D – Cake + Pie Auction
- E – Pedal Tractor
- F – Garden Tractor Pull
- G – Friday Night Under the Lights
- H – Frog Jumping – Bale Rolling
- I – Light Horse Ring
- J – Light Horse
- K – Dairy Beef Show Rings
- L – Dairy Beef Tie Up
- M – Poultry
- N – Sheep Pens
- O – Petting Zoo + Pony Rides
- P – Office
- Q – First Aid
- R – Heavy Horse Ring
- S – Car Show
- T – Truck, Tractor Show
- U – Food Vendors
- V – Main Stage Entertainment
- X – Snippity the Clown
- Y – Soper Creek Wildlife
- Z – Wildlife Mount
- AA – Nail Driving, Log Sawing
- BB – Tbone Show + Sale
- B&S – Brent & Sarah
- CC – Midway
- MM – Mega Machines + Black Rock Climbers
- PTD – Pre-Teen Dance
- FFD – Fall Fair Dance on Arena Floor



0 40 80 160 Meters

--- Emergency Route